

Phone: 22679009
 AFTN : HECAYOYX
 Telex : 93044 TYRAN UN
 Fax : 22678882 & 22678885

ARAB REPUBLIC OF EGYPT
 MINISTRY OF CIVIL AVIATION
 NATIONAL AIR NAVIGATION SERVICES COMPANY
 AERONAUTICAL INFORMATION SERVICES
 CAIRO 11776

(AIRAC)
 AIP
 SUPPLEMENT
 1/19
 14 FEB 2019

Effective date 28 MAR 2019 at 1400 UTC

**SUPPLEMENT TO
 THE AIP A.R.E
 AD**

Borg El Arab INTL AP (HEBA)

Till 2004230001EST, RWY 14/32 CLSD and all the related charts, procedures and data are suspended. All TWY CLSD EXC H, G, L, M & N. TWY (A) used as main RWY with the FLW Characteristics :

• **Runway Physical Characteristics**

Designations RWY NR	True BRG	Dimensions of RWY (M)	Strength (PCN) and surface of RWY and SWY	THR coordinates, RWY end coordinates & THR geoid undulation	THR ELEV & highest ELEV of TDZ of precision APP RWY
1	2	3	4	5	6
14R	143.5 °	3400X45	PCN	305544.78N0294059.41E	THR 172FT
32L	323.5 °		62/F/B/W/T ASPH	305416.79N0294216.74E	THR 127FT
Slope of RWY-SWY	SWY dimensions (M)	CWY dimensions (M)	Strip dimensions (M)	OFZ	Remarks
7	8	9	10	11	12
0.4%	NIL	NIL	3520X300	NIL	NIL

• **Declared Distances**

RWY designator	TORA (M)	TODA (M)	ASDA (M)	LDA (M)	Remarks
1	2	3	4	5	6
14R	3400	3400	3400	3400	NIL
32L	3400	3400	3400	3400	NIL

- Approach and Runway Lighting

RWY Designator	APCH LGT Type INTST	THR LGT colour WBAR	VASIS (MEHT) PAPI	TDZ, LGT LEN	RWY Centre Line LGT, Length, spacing, colour, INTST	RWY edge LGT LEN, spacing colour INTST	RWY End LGT colour WBAR	SWY LGT LEN (M) colour	RMK
1	2	3	4	5	6	7	8	9	10
14R	SALS 420 M LIH	Green –	PAPI 3° 1 bar 61FT	NIL	NIL	600M Y 60M LIH & 2800M W 60M LIH	Red –	NIL	NIL
32L	CAT I 900 M LIH	Green –	PAPI 3° 1 bar 70FT	NIL	NIL	600M Y 60M LIH & 2800M W 60M LIH	Red –	NIL	NIL

- RWY Marking and Light

ID,CL,TDZ & aiming point	: Marked & unlighted
THR & edge	: Marked & lighted

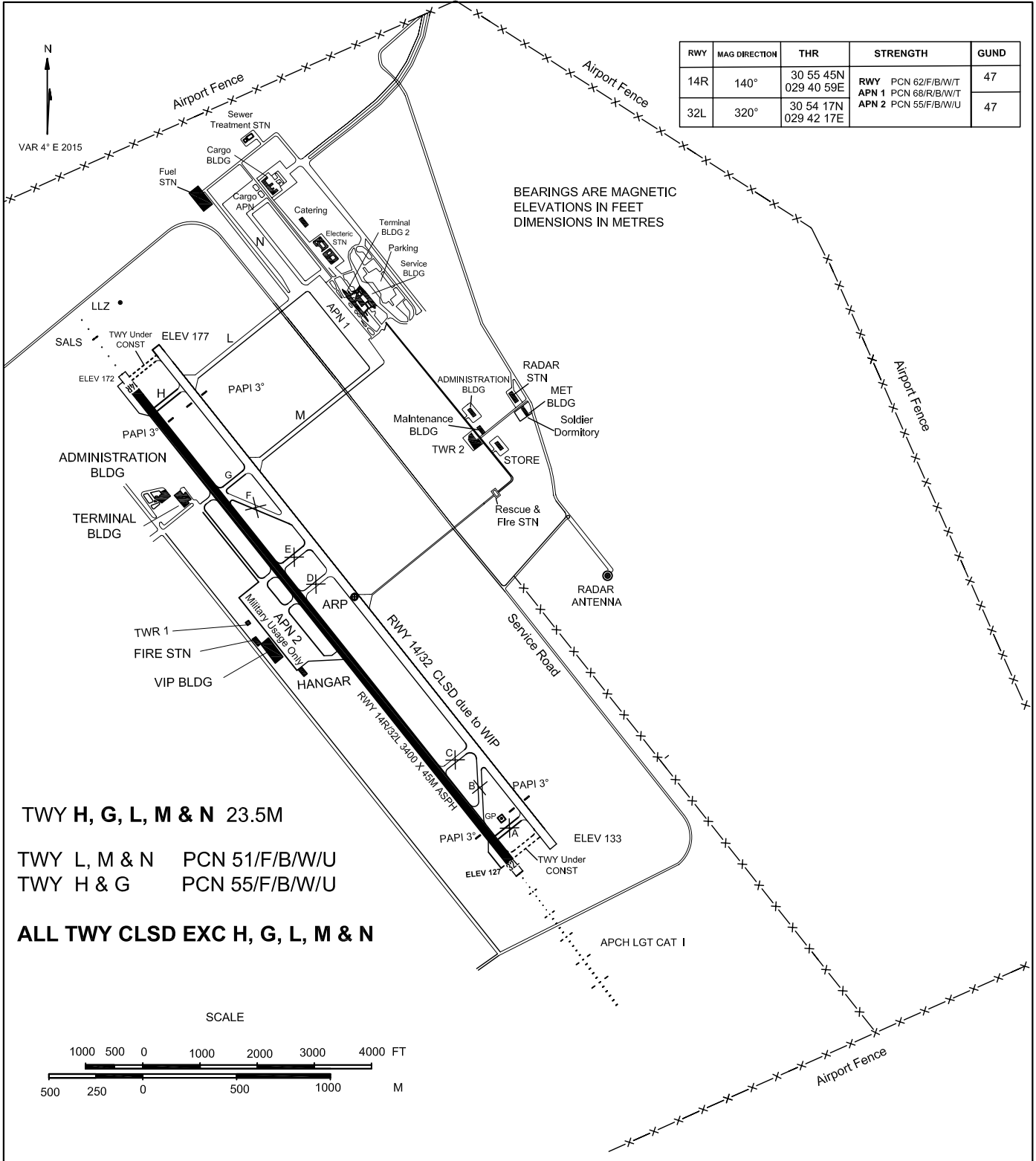
Note : See the attached charts related to this AIRAC AIP SUP.

Attachment to AIP AIRAC SUP 1/19

AERODROME CHART- ICAO 30 55 05N ELEV 177FT
029 41 45E

TWR	119.1
ALTN	118.9
GND	121.9
APP	122.8
RADAR APP	122.3
EMERG	121.5

ALEXANDRIA /
BORG EL ARAB



Attachment to AIP AIRAC SUP 1/19

AIRCRAFT PARKING/ DOCKING CHART-ICAO.

APN ELEV 160FT

TWR	119.1
ALT	118.9
GND	121.9
APP	122.8
RADAR APP	122.3
EMERG	121.5

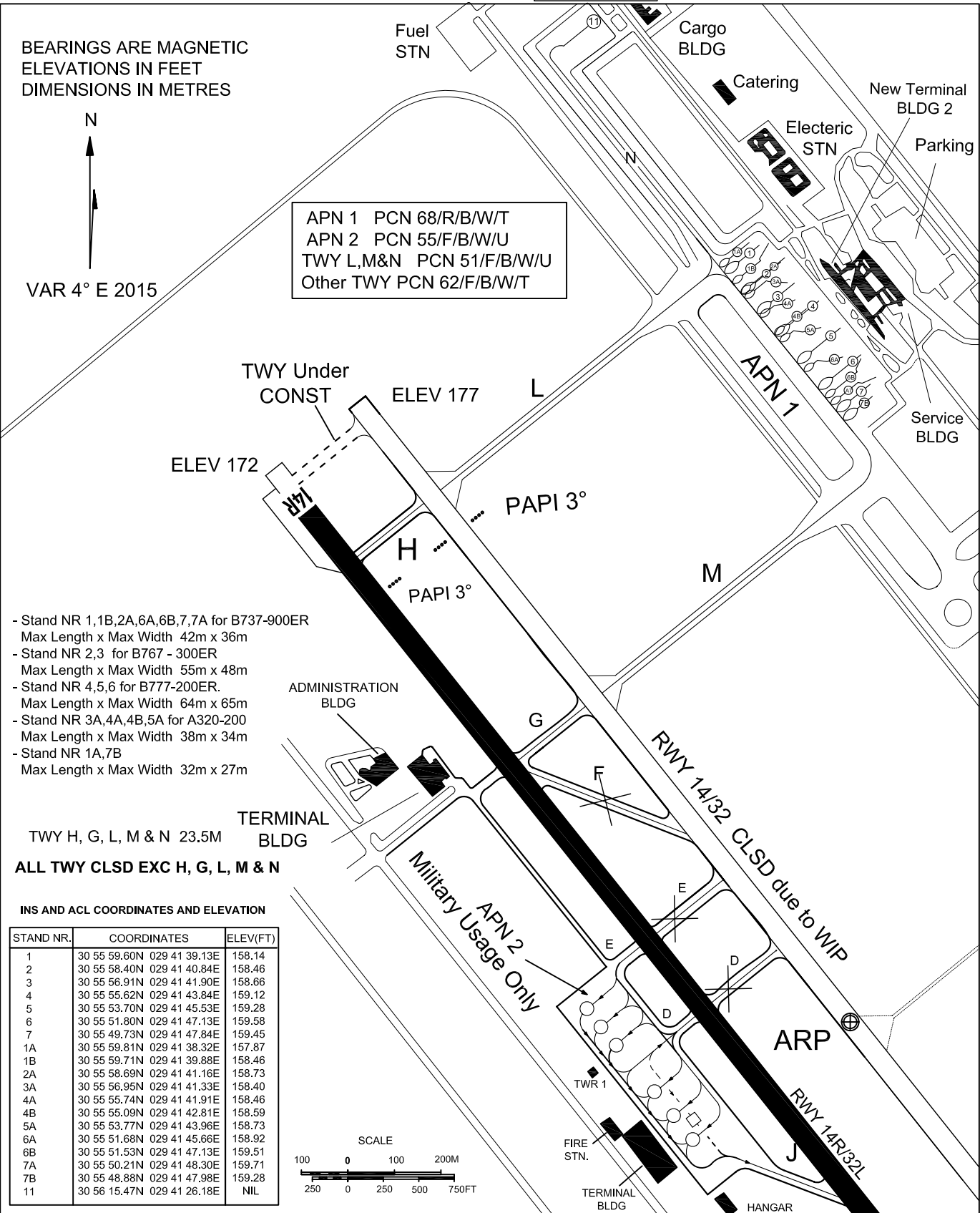
ALEXANDRIA / BORG EL ARAB

BEARINGS ARE MAGNETIC
ELEVATIONS IN FEET
DIMENSIONS IN METRES



VAR 4° E 2015

APN 1 PCN 68/R/B/W/T
APN 2 PCN 55/F/B/W/U
TWY L,M&N PCN 51/F/B/W/U
Other TWY PCN 62/F/B/W/T

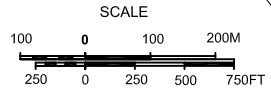


- Stand NR 1,1B,2A,6A,6B,7,7A for B737-900ER
Max Length x Max Width 42m x 36m
- Stand NR 2,3 for B767 - 300ER
Max Length x Max Width 55m x 48m
- Stand NR 4,5,6 for B777-200ER.
Max Length x Max Width 64m x 65m
- Stand NR 3A,4A,4B,5A for A320-200
Max Length x Max Width 38m x 34m
- Stand NR 1A,7B
Max Length x Max Width 32m x 27m

TWY H, G, L, M & N 23.5M
ALL TWY CLSD EXC H, G, L, M & N

INS AND ACL COORDINATES AND ELEVATION

STAND NR.	COORDINATES	ELEV(FT)
1	30 55 59.60N 029 41 39.13E	158.14
2	30 55 58.40N 029 41 40.84E	158.46
3	30 55 56.91N 029 41 41.90E	158.66
4	30 55 55.62N 029 41 43.84E	159.12
5	30 55 53.70N 029 41 45.53E	159.28
6	30 55 51.80N 029 41 47.13E	159.58
7	30 55 49.73N 029 41 47.84E	159.45
1A	30 55 59.81N 029 41 38.32E	157.87
1B	30 55 59.71N 029 41 39.88E	158.46
2A	30 55 58.69N 029 41 41.16E	158.73
3A	30 55 56.95N 029 41 41.33E	158.40
4A	30 55 55.74N 029 41 41.91E	158.46
4B	30 55 55.09N 029 41 42.81E	158.59
5A	30 55 53.77N 029 41 43.96E	158.73
6A	30 55 51.68N 029 41 45.66E	158.92
6B	30 55 51.53N 029 41 47.13E	159.51
7A	30 55 50.21N 029 41 48.30E	159.71
7B	30 55 48.88N 029 41 47.98E	159.28
11	30 56 15.47N 029 41 26.18E	NIL



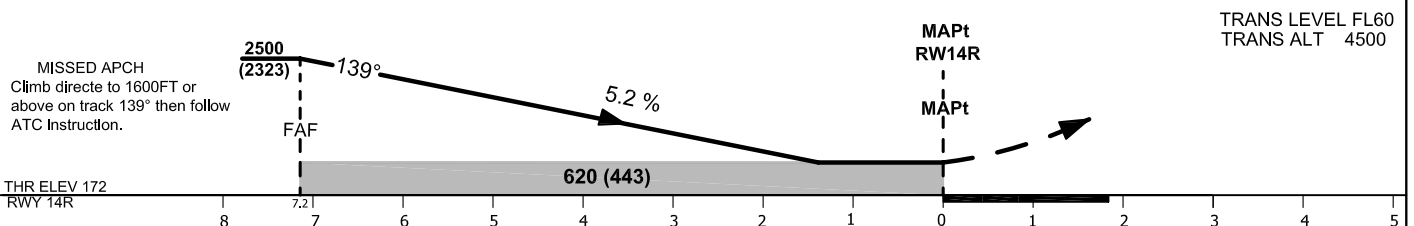
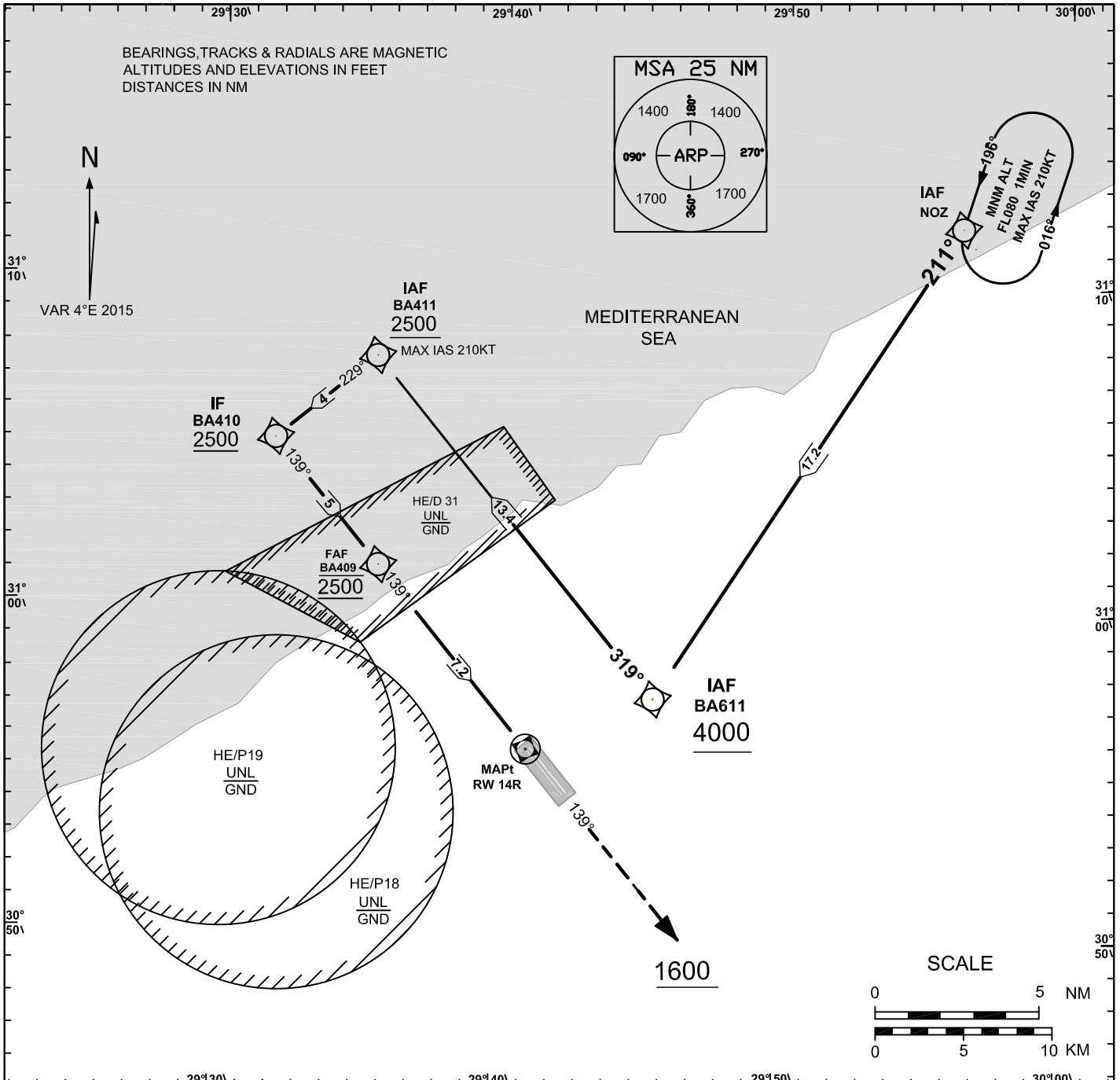
Attachment to AIP AIRAC SUP 1/19

INSTRUMENT APPROACH CHART-ICAO
AD ELEV 177 FT
HEIGHTS RELATED TO AD ELEV

TWR	119.1
GND	121.9
APP	122.8
RADAR APP	122.3
EMERG	121.5

ALEXANDRIA / BORG EL ARAB

RNP RWY 14R



OCA(OCH)	A	B	C	D
LNAV	620 (443)			

GND speed -KT	70	90	100	120	140	160
Descent angle(3.00°)	372	478	531	637	743	850

Attachment to AIP AIRAC SUP 1/19

Instrument Approach CHART-ICAO	AD ELEV 177FT	TWR 119.1	ALEXANDRIA / BORG EL ARAB RNP RWY 14R
	HEIGHTS RELATED TO AD ELEV	GND 121.9	
		APP 122.8	
		RADAR APP 122.3	
		EMERG 121.5	

TABULAR DESCRIPTION

Serial Number	Path Descriptor	Waypoint Identifier	Fly-Over	Course °M(°T)	Magnetic Variation	Distance (NM)	Turn Direction	Altitude(ft)	Speed (Kts)	VPA°/TCH (FT)	Navigation Specification
010	IF	NOZ	-	-	-	-	-	+FL080	-	-	RNP APCH
020	TF	BA611	-	211(215.1)	-	17.2	-	+4000	-	-	RNP APCH
030	TF	BA411	-	319(322.8)	-	13.4	-	+2500	-210	-	RNP APCH
040	TF	BA410	-	229(232.9)	-	4	-	+2500	-	-	RNP APCH
050	TF	BA409	-	139(142.8)	-	5	-	@2500	-	-	RNP APCH
060	TF	RW14R	Y	139(142.8)	-4	7.2	-	--	-	-3.0/50	RNP APCH
070	FA	-	-	139(142.8)	-	-	-	+1600	-	-	RNP APCH
080	HM	NOZ	-	196(199.7)	-	1 MIN	R	+FL080	-210	-	RNP APCH

WAYPOINT LIST

Waypoint Identifier	Coordinates
NOZ	31° 11' 15.5" N 029° 57' 02.6" E
BA611	30° 57' 10.0" N 029° 45' 33.0" E
BA411	31° 07' 54.0" N 029° 36' 06.0" E
BA410	31° 05' 29.9" N 029° 32' 24.3" E
BA409	31° 01' 30.5" N 029° 35' 55.3" E
RW14R	30° 55' 44.78" N 029° 40' 59.41" E

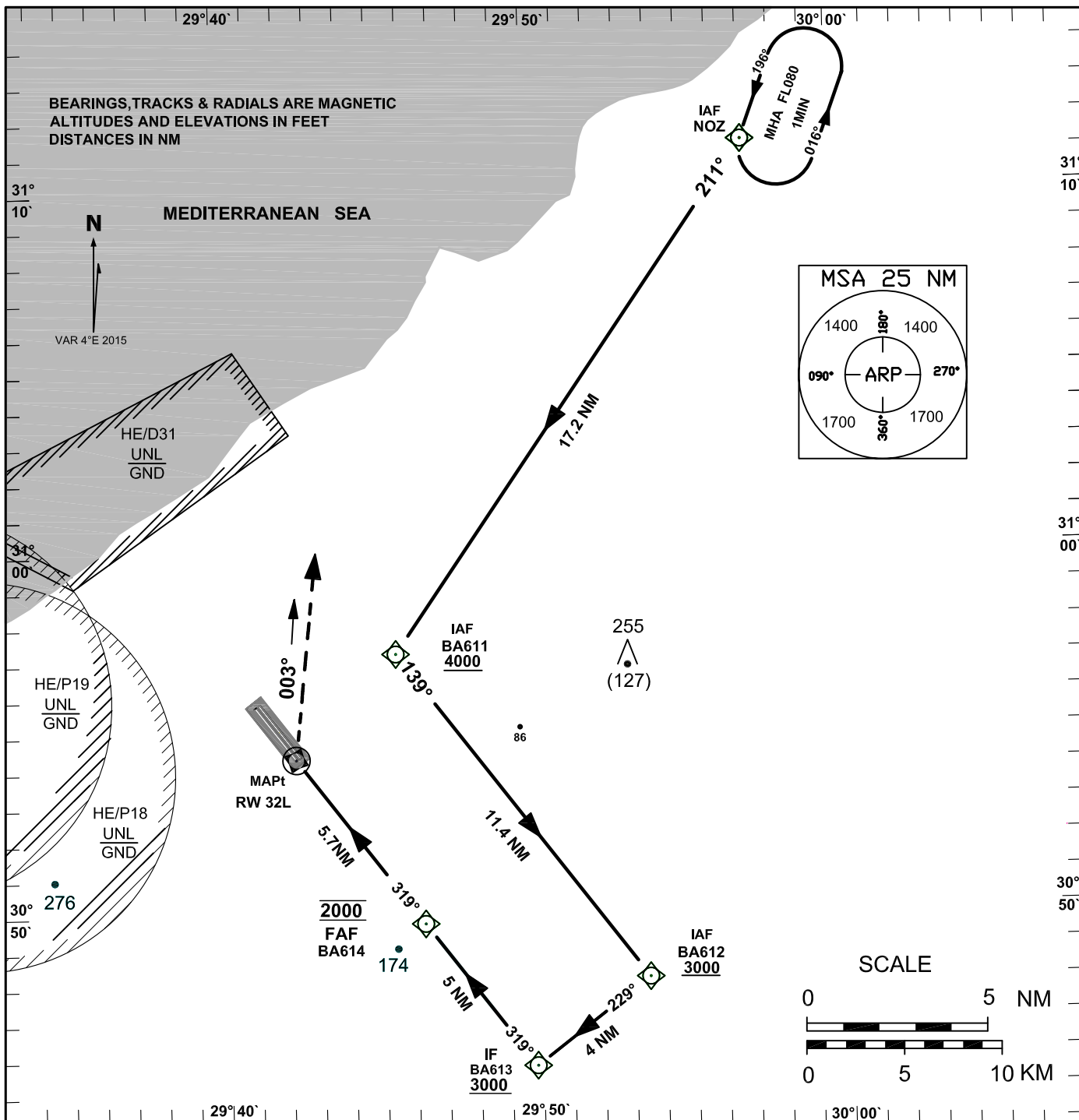
Attachment to AIP AIRAC SUP 1/19

INSTRUMENT APPROACH
CHART-ICAO

AD ELEV 177 FT
HEIGHTS RELATED TO
THR RWY32L 127FT

TWR	119.1
GND	121.9
APP	122.8
RADAR APP	122.3
EMERG	121.5

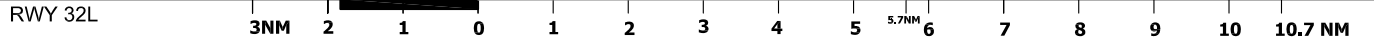
ALEXANDRIA / **BORG EL ARAB**
RNP
RWY 32L



TRANS LEVEL FL60
TRANS ALT 4500

MISSED APCH
Climb Immediately Right Turn
on Track 003° to Reach ALT
1100 or above then follow
ATC instruction.

THR ELEV 127



OCA(OCH)	A	B	C	D
LNAV	620(493)			

GND speed - KT	70	90	100	120	140	160
Descent angle(3.00°)	372	478	531	637	743	850

Attachment to AIP AIRAC SUP 1/19

Instrument Approach CHART-ICAO	AD ELEV 177FT	TWR 119.1	ALEXANDRIA / BORG EL ARAB RNP RWY 32L
	HEIGHTS RELATED TO THR RWY 32L ELEV 127FT	GND 121.9 APP 122.8 RADAR APP 122.3 EMERG 121.5	

TABULAR DESCRIPTION											
Serial Number	Path Descriptor	Waypoint Identifier	Fly-Over	Course °M(°T)	Magnetic Variation	Distance (NM)	Turn Direction	Altitude(ft)	Speed (Kts)	VPA°/TCH (FT)	Navigation Specification
010	IF	NOZ	-	-	-4	-	-	+FL080	-	-	RNP APCH
020	TF	BA611	-	211(215.1)	-4	17.2	L	+4000	-	-	RNP APCH
030	TF	BA612	-	139(142.9)	-4	11.4	R	+3000	-	-	RNP APCH
040	TF	BA613	-	229(232.9)	-4	4.0	R	@3000	-	-	RNP APCH
050	TF	BA614	-	319(322.9)	-4	5.0	-	@2000	-	-	RNP APCH
060	TF	RW32L	Y	319(322.9)	-4	5.7	-	-	-	-3.0/50	RNP APCH
070	FA	-	-	003(006.6)	-4	-	-	+1100	-	-	RNP APCH
080	HM	NOZ	-	196(199.7)	-4	1 MIN	L	+FL080	-	-	RNP APCH

WAYPOINT LIST

Waypoint Identifier	Coordinates
NOZ	31° 11' 15.5"N 029° 57' 02.6 E
BA611	30° 57' 10.0"N 029° 45' 33.0"E
BA612	30° 48' 04.9"N 029° 53' 30.4"E
BA613	30° 45' 40.6"N 029° 49' 49.1"E
BA614	30° 49' 40.4"N 029° 46' 19.2"E
RW32L	30° 54' 16.79" N 029° 42' 16.74"E